



SaFe Professional Learning and Development Programme 23-24

Curriculum, Teaching & Learning

Assessment & Moderation

Additional Needs & Inclusion

Leadership Development



An education system that is better for all

Introduction



Dear Colleague

We are delighted to share our 2023/2024 Professional Learning programme with you.

SAfE is running a rich programme of professional learning from September, which is driven by SAfE's professional learning principles, directly aligned to the Teacher and Headteacher professional standards.

At the heart of all we do is our commitment to building an education system that is better for all: championing educational equity across Surrey.

We continue to offer our comprehensive range of events and networks, which support you and your school or trust's inclusive and ambitious professional learning improvement journey.

Take a look at what's on offer and book your places.

An exciting additional element to our programme is the provision of a suite of Assessment & Moderation events and networks, delivered on behalf of SCC. Please take a look at the full listing of this new offer on page 5.

Our 23/24 programme includes a number of elements which now offer teachers the opportunity to reference SAfE's professional learning programme to support and complement their work towards securing Chartered Status. You will find the CCT logo on the pages of this brochure; clicking on the logo will take you to their website. The Chartered College of Teaching Chartered Status allows teachers to 'build on their individual practice, priorities and interests driving a meaningful improvement in [their] school context'.

Please take a few moments to look through this brochure and do not hesitate to contact the team at admin@schoolsallexcel.com with any further questions or for assistance booking your places.

We look forward to working with every Surrey school and setting in 2023/2024.

Best Wishes

Maria

Maria Dawes CEO



For more information about the work of the Chartered College, click on the image which will take you to their homepage



Contents

3	Curriculum, Teaching & Learning
7	Assessment & Moderation
9	Additional Needs & Inclusion
13	Leadership Development - SAE and STSN
18	SAE Subscription

"SAE support draws upon vast and varied experience of strategic leadership and skilful coaching, to offer insightful and impactful support and challenge. After every meeting, I leave recharged and refocused, for the opportunities ahead."

Log in to your school account to book SAE CPD, events and services

☐ Remember Me

Use your school's unique log-in to book SAE events and products. If you are not a Surrey school and you do not have a log-in, please contact bookings@schoolsallexcel.com for support.

On each page you can access each event's booking and information webpage, via embedded links to the SAE Bookings portal

If you would like more information about our Bookings Portal, including your school's login details, contact us at bookings@schoolsallexcel.com

To access the full calendar of events that SAE is offering this year, [click here](#)

SAE Subscription - No increase in price since Sept 2022 - see page 18

The subscriber inclusive events and discounted prices are shown throughout the brochure.

Subscriber discount will be automatically applied to your booking when you log in

If you are an existing subscriber, your subscription will automatically renew and an invoice for 2023- 2024 will be emailed to you in early September.

An education system that is better for all

Curriculum, Teaching & Learning

Our programme is designed to support you develop high-quality provision across all areas. We continue to respond to emerging themes from inspections, national priorities, and data trends to ensure our programme is comprehensive and receptive to schools' needs.

Our programmes are delivered by current great practitioners or those that have up-to-date and recent experience and evaluated to ensure maximum learning impact for all. We work with national, and international experts, underpinned by evidence informed research so that schools can access the highest quality training and development.

Most of our professional learning programmes span several sessions across a term or terms that will allow participants to rehearse and embed learning in between sessions.

We also continue to offer a variety of successful networks where leaders can think, reflect, share, and network with their peers through evidence informed sessions.

We have further developed our EYFS programme based on feedback from EYFS Leaders.

Event and Booking Link	Date	Phase	Cost for Subscribers	Cost for Non Subscribers
<u>New to Subject Leadership Programme Autumn 23</u>	Commences 21 Sept 23	Primary	FREE	£210.00
<u>Early Years Sequencing to Build Knowledge Autumn 23</u>	21 Sept 23	EYFS	£120.00	£150.00
<u>Primary English & Phonics Network Meetings 23-24</u>	Commences 28 Sept 23	Primary	FREE	£350.00

Curriculum, Teaching & Learning

Event and Booking Link	Date	Phase	Cost for Subscribers	Cost for Non Subscribers
<u>Early Reading Little Wandle Support Autumn 23</u>	10 Oct 23	Primary	FREE	FREE
<u>Early Years Leads Network 23-24</u>	Commences 03 Oct 23	Primary	FREE	£260.00
<u>High Impact Teaching Series: Reading & Writing Primary 23-24</u> 	Commences 12 Oct 23	Primary	£280.00	£350.00

“I really liked the focus for each session. I found the Assessment and Working scientifically sessions particularly helpful. It has also been great to be pointed to high quality resources.”
HIT Primary Science

The Chartered College of Teaching Chartered Status allows teachers to ‘build on their individual practice, priorities and interests driving a meaningful improvement in [their] school context’.

Our SAfE 23-24 programme includes a number of elements which now offer teachers the opportunity to reference SAfE’s professional learning programme to support and complement their work towards securing Chartered Status.

CHARTERED
COLLEGE OF
TEACHING

Curriculum, Teaching & Learning

Event and Booking Link	Date	Phase	Cost for Subscribers	Cost for Non Subscribers
<u>Training for Early Years Teaching Assistants 23-24</u>	06 Nov 23	EYFS	£100.00	£125.00
<u>Primary English Leads Conference Autumn 23</u>	10 Nov 23	Primary	£220.00	£275.00
<u>Advocating for Early Years 23-24</u> 	13 Nov 23	EYFS	£240.00	£300.00
<u>Maths Metacognition in the Early Years 23-24</u> 	20 Nov 23	EYFS	£240.00	£300.00
<u>Subject Leader Training - insight into EYFS 24</u>	06 Feb 24	EYFS/ Primary	£70.00	£87.50
<u>Seamless Transitions from EYFS to KS1</u>	10 Jun 24	EYFS	£80.00	£100.00

Curriculum, Teaching & Learning

Our Secondary Curriculum Forum is an opportunity for Heads of Department to get together and network. An over-arching input will precede subject-specific break out sessions. Joining these communities of good practice is free for all subscribing secondary schools.

- An opportunity to share good practice and network with other secondary subject leads.
- Building a community of good practice as a support for secondary subject leads in Surrey secondary schools
- Sharing knowledge and skills for the benefit of all children, but particularly those with additional needs.

Event and Booking Link	Date	Phase	Cost for Subscribers	Cost for Non Subscribers
<u>Secondary Curriculum Forum 23-24</u>	09 Nov 23	Secondary	FREE	£300.00



SFET Teaching School Hub
Success for Every Teacher
Serving Hampshire and Surrey



We partner with local and national expertise such as North-East Hants and Surrey Maths Hub and the Teaching School Hubs to ensure a high-quality professional learning programme for our schools.

“A fantastic opportunity to support and help develop already strong teaching practices and keep up to date with developments in the world of pedagogy with a really supportive team of professionals.”
Secondary Curriculum Forum



An education system that is better for all

Assessment & Moderation

From September, Schools Alliance for Excellence will be Surrey's provider for assessment and moderation. Working in partnership with SCC, Surrey schools will be supported to ensure that statutory assessment is accurate and that teachers are fully equipped to administer and deliver all assessments.

Surrey maintained schools are entitled to the fully funded statutory assessment support service, including email and telephone access to a team of advisors able to give advice relating to assessment including statutory teacher assessment and statutory testing. Please [click here](#) for further information.

A Service Contract is available for academies, free schools and participating independent schools. Please [click here](#) for further information.

Additionally, if you would like to discuss a bespoke assessment package for your school, or for further information about this service from SAfE, please contact primaryassessment@schoolsallexcel.com detailing what you feel is needed for your school or trust and the team will respond.

Event & Booking Link	Date	Cost for Subscribers	Cost for Non Subscribers
<u>Beyond Statutory Assessment in Year 2 23-24.</u>	12 Oct 23	£140.00	£175.00
<u>New to Year 6: Pedagogy, Practice and Statutory Assessment 23-24.</u>	16 Oct 23	£140.00	£175.00
<u>Experienced Year 6 Teachers: Pedagogy, Practice and Statutory Assessment 23-24.</u>	09 Oct 23	£140.00	£175.00
<u>*Maintained Schools only Assessment Leader AM Briefings 23-24.</u>	09 Nov 23 (AM)	£100.00	£125.00

Assessment & Moderation

Event & Booking Link	Date	Cost for Subscribers	Cost for Non Subscribers
*Maintained Schools only <u>Assessment Leader</u> <u>PM Briefings</u> <u>23-24</u>	09 Nov 23 (PM)	£100.00	£125.00
<u>Year 2 Cross-school</u> <u>Writing Moderation</u> <u>Spring 24</u>	12 Jan 24	£80.00	£100.00
<u>Year 6 Cross-school</u> <u>Writing Moderation</u> <u>Spring 24</u>	01 Feb 24	£80.00	£100.00
<u>Assessment Briefing</u> <u>for Headteachers</u> <u>23-24</u>	29 Feb 24	£60.00	£75.00
<u>Year 3, 4, 5</u> <u>Standardisation</u> <u>Sessions</u> <u>Summer 24</u>	26 Apr 24	£80.00	£100.00

“Just a quick note to say thank you SAfE for the excellent training - your clear, focused and supportive presentation will have made a positive impact on the team and we will be more prepared because of it.”



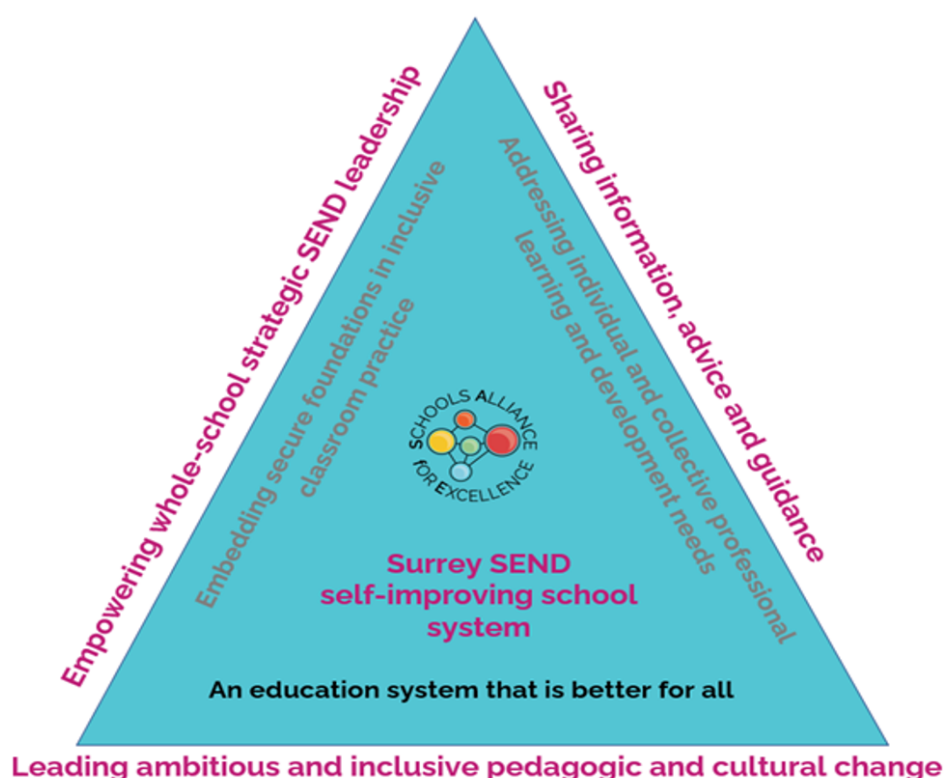
Additional Needs & Inclusion

SAfE supports schools and leaders to develop a clear understanding of SEND and Inclusion, to support firm foundations for further developing great inclusive practices.

Working in partnership with SCC, our programme ensures SENCos have the insight and leadership capacity to influence whole school practices and developments to support SEND and Inclusion.

Our networks provide a supportive environment where leaders can collaborate, reflect and then plan further strategic improvements in their setting for the benefit of all learners.

Schools are central to Surrey's self-improving system. We support all colleagues to challenge thinking around existing practices so that whole school approaches and provision meet the needs of the current cohort.



Additional Needs & Inclusion

Event and Booking Link	Date	Phase	Cost for Subscribers	Cost for Non Subscribers
<u>SENCO Leadership Autumn 23</u>	26 Sep 23	All Phases	£420.00	£525.00
<u>Advanced SENCO Leadership Autumn 23</u>	26 Sep 23	All Phases	£420.00	£525.00
<u>Secondary Pastoral Network</u>	Commences 02 Oct 23	Secondary	FREE	£200.00
<u>New to Role SENCO Autumn 23</u>	04 Oct 23	All Phases	£160.00	£200.00
<u>Strategic Development of Provision in Schools Autumn 23</u>	05 Oct 23	All Phases	£50.00	£50.00

“

Possibly the most informative, engaging and supportive training I have ever had in 8 years teaching" SENCo Leadership Training with SAfE in 22/23

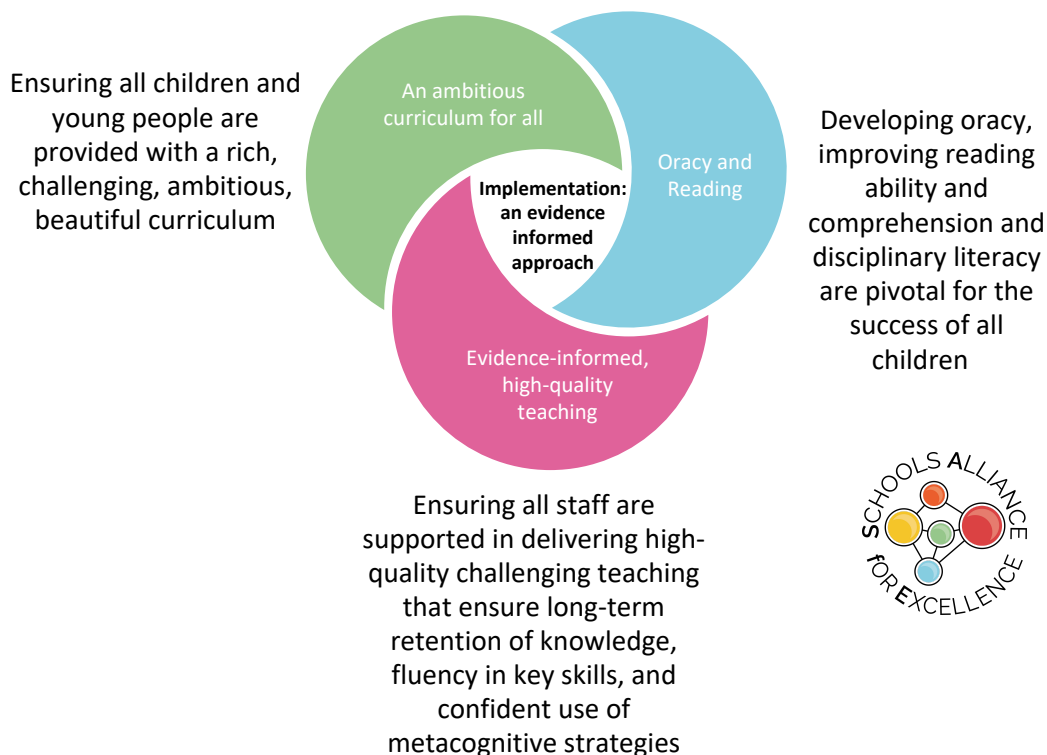
”

Additional Needs & Inclusion

Event and Booking Link	Date	Phase	Cost for Subscribers	Cost for Non Subscribers
<u>SAfE & Surrey Senco Network Meetings 23-24</u>	Commences 10 Oct 23	All Phases	FREE	FREE
<u>SEND Assessment and Identification of Needs Autumn 23</u>	12 Oct 23	All Phases	£20.00	£20.00
<u>SEND Specialist Centre Network Meetings 23-24</u>	Commences 07 Nov 23	All Phases	FREE	FREE
<u>Surrey Schools SEND Conference Autumn 23</u>	30 Nov 23	All Phases	£200.00	£250.00
<u>SENCO Leadership Spring 24</u>	Commences 25 Jan 24	All Phases	£420.00	£525.00
<u>Advanced SENCO Leadership Spring 24</u>	Commences 25 Jan 24	All Phases	£420.00	£525.00
<u>New to Role SENCO Summer 24</u>	18 Jun 24	All Phases	£160.00	£200.00

Additional Needs & Inclusion

FUNDAMENTALS FOR EDUCATIONAL EQUITY IN THE CLASSROOM



For Secondary Phase only

<u>Educational Equity in Secondary Schools 23-24</u>	Commences 31 Oct 23	FREE	£250.00
-------------------------------------------------------------	----------------------------	-------------	----------------

Our Educational Equity Programme is being delivered in partnership with Marc Rowland.

Marc has worked with SAfE and Surrey leaders for the past two years, supporting schools to challenge their leadership and practice to sustain school improvement and meeting the needs of every pupil.

SAfE invites every Surrey secondary school to join this programme in 23-24.

We will collaborate with schools to 'widen the lens' on disadvantage. We will work on the understanding that the impacts of disadvantage on learning are often the result of more than socio-economic status, as measured by the 'Pupil Premium'.

An education system that is better for all

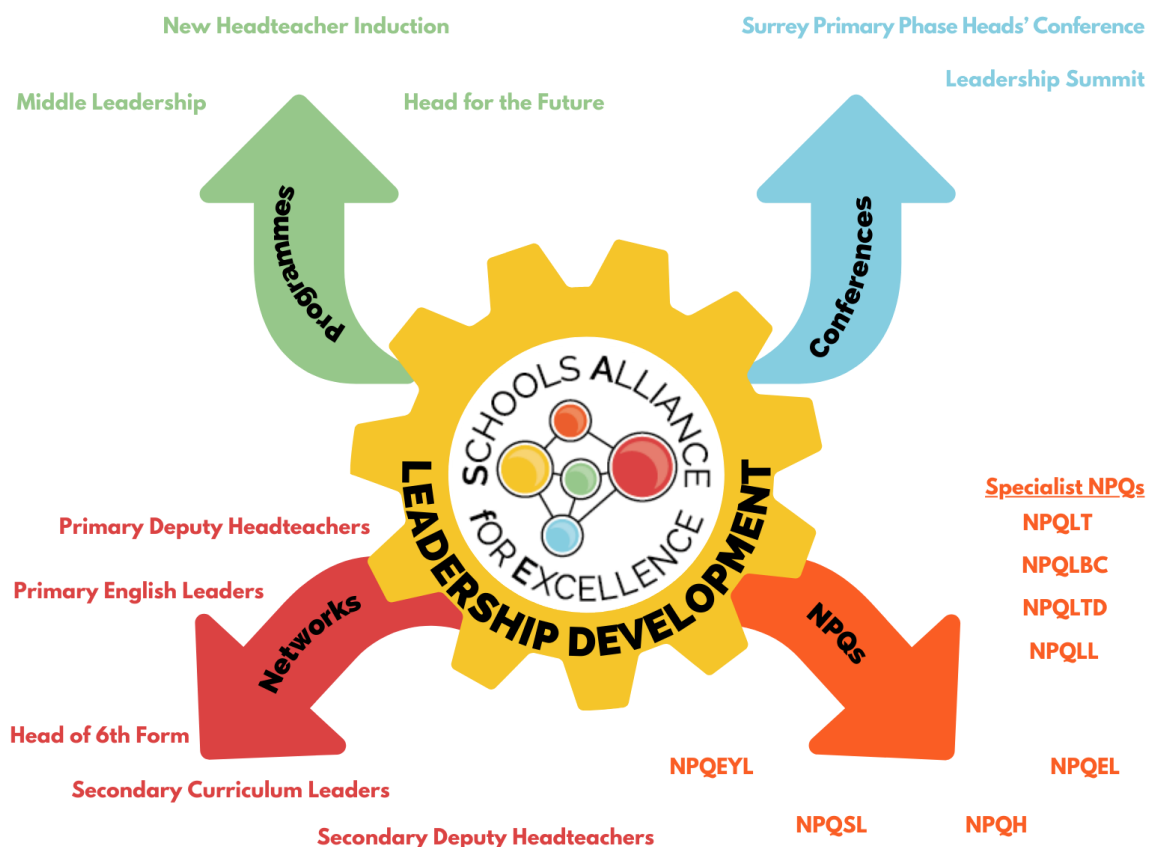
Leadership Development

Effective school leadership empowers and enables the core purpose of schools: learning.

Our approach is underpinned by the SAfE professional learning principles and facilitate learning over time rather than via standalone events. SAfE Leadership networks and programmes engage leaders in thinking, learning, reflecting and sharing.

At SAfE, we believe that when we support our leaders to be more impactful, we unlock the potential that is harnessed in each and every one of our Surrey schools. Consequently, we are proud to support better leadership by making sure that our leaders access evidence informed thinking, so that they can lead both systems, and more importantly, lead people.

The SAfE provision for leadership development aims to support school leaders as they progress within their current responsibility and towards the next stage in school leadership.



An education system that is better for all

Leadership Development

Event and Booking Link	Date	Phase	Cost for Subscribers	Cost for Non Subscribers
<u>New Headteacher Welcome Breakfast Autumn 23</u>	13 Sep 23	All Phases	FREE	FREE
<u>New Headteacher Induction Programme 23-24</u>	Commences 03 Oct 23	All Phases	£1,550.00	£1,750.00
<u>Secondary Deputy Headteacher Network 23-24</u>	Commences 11 Oct 23	Secondary	£300.00	£375.00
<u>Head of Sixth Form Network 23-24</u>	Commences 11 Oct 23	Secondary	£300.00	£375.00

“

“Professional development is the best bet we have for improving the learning and life chances of students in our care.”

Peps Mccrea

”



An education system that is better for all

Leadership Development

Event and Booking Link	Date	Phase	Cost for Subscribers	Cost for Non Subscribers
<u>Primary Assistant and Deputy Headteacher Network and briefings 23-24</u>	Commences 01 Nov 23	Primary	£160.00	£200.00
<u>SAfE/Xavier Middle leader Development Primary programme 23-24</u>	01 Nov 23	Primary	£176.00	£220.00
<u>SAfE/Xavier Middle leader Development Secondary programme 23-24</u>	01 Nov 23	Secondary	£176.00	£220.00
<u>Primary Assistant and Deputy Headteacher Conference 2024</u>	30 Jan 24	Primary	£200.00	£250.00

We partner with Xavier and SFET Teaching School Hubs, St Peter's Catholic School and national experts to ensure a high-quality professional learning programme for our schools.



Leadership Development

Event and Booking Link	Further information
Coaching for Professional Development 23-24	<p>All Phases</p> <p>Start date and cost information will follow in due course. Please contact admin@schoolsallexcel.com with enquiries.</p>
Coaching Network 23-24	<p>All Phases</p> <p>Start date and cost information will follow in due course. Please contact admin@schoolsallexcel.com with enquiries.</p>
SAfE Leadership Conference 24	<p>All Phases</p> <p>This will take place in March 24. Further information will follow in due course.</p>

“

"The DH professional learning network is some of the best CPD I have. Sessions are a mix of learning and sharing thinking with other DHs. I always come away having reflected on what I need to do differently in my school. I like that the agendas are planned with a group of DHs so that they reflect the current issues we are dealing with."

”



Make a real impact in your schools with our NPQs

What are National Professional Qualifications (NPQs)?

NPQs are the most widely recognised qualifications in the education sector for current and aspiring leaders.

Why do your NPQ with STSN?

STSN is working with SFET and Xavier Teaching School Hubs to provide the full suite of reformed NPQs. STSN has successfully delivered NPQs to over 3700 leaders since 2013. It has worked with school leaders from 35 Local Authorities in the South East and East of England and London. STSN delivers NPQs on behalf of Teach First.

Which NPQ is right for me?

There are eight NPQ programmes to support aspiring and established leaders at every level. These NPQs either support the development of specialist knowledge and skill or focus on leadership development at a range of levels.

Specialist NPQs	For teachers and leaders who have, or are aspiring to have, responsibilities for...	Leadership NPQs	For school leaders who are, or are aspiring to be...
NPQ in Leading Teaching (NPQLT)	Leading teaching in a subject, year group, key stage or phase	NPQ in Senior Leadership (NPQSL)	A senior leader with cross-school responsibilities
NPQ in Leading Behaviour and Culture (NPQLBC)	Leading behaviour and/or supporting pupil wellbeing in their school	NPQ in Headship (NPQH)	A headteacher or head of school with responsibility for leading a school
NPQ in Leading Teacher Development (NPQLTD)	Leading the development of other teachers in their school	NPQ in Executive Leadership (NPQEL)	An executive head or have a school trust CEO role with responsibility for leading several schools
NPQ in Leading Literacy (NPQLL)	Leading literacy across a school, year group, key stage or phase	NPQ in Early Years Leadership (NPQEYL)	Managers of private, voluntary, and independent nurseries. Headteachers of school-based or maintained nurseries. Childminders with leadership responsibilities.

Funding

Teachers and leaders employed in state-funded schools, as well as those employed in state-funded organisations in England that offer education to 16–19-year-olds, will be able to access these fully funded NPQs. Funding is also available for managers of PVI nurseries registered with OfSTED. Further details on available funding can be found in the 'Funding' tab of each individual programme page on our website www.stsn.co.uk.

Cohorts start in October and February.

Get in touch today to find out more and start transforming your teaching career. www.stsn.co.uk / npq@stsn.co.uk

An education system that is better for all



SAfE Subscription

23-24

We are delighted to offer SAfE's subscriptions for 23-24 at the same rate as Sept 2022.

We believe that all Surrey children are our collective responsibility and working in partnership, drawing on our collective strengths, we can support each other to do the best for every child through excellent education. SAfE is committed to working with all schools and academies regardless of phase or status.

Our core offer subscription has been scoped to complement our free offer to all schools and academies, our commission to provide statutory school improvement and governance services to Surrey schools and our traded offer.

Our education partnership thrives because schools participate, engage, support and drive the work forwards. Without the support of every school and the collaboration of partners, SAfE would be unable to continue to develop and deliver to meet the collective need.

We are committed to leading the school-led change that we have set as our vision for education in Surrey, working with every school and partner.

All Surrey schools and academies are therefore warmly invited to benefit from SAfE's services and we are delighted that over 300 schools have opted to subscribe to SAfE.

The subscriber inclusive events and discounted prices are shown throughout the brochure. Subscriber discount will be automatically applied to your booking when you log in.

If you are an existing subscriber, you do not need to do anything to continue your school's subscription for the year 2023/2024. Your subscription invoice will be emailed to you in early September.

Our subscriptions are calculated on a banded basis:

School Size	School cost
Less than 100	£125
100 – 299	£250
300-449	£475
450-599	£600
600 – 899	£850
900 - 1199	£1,250
1200 -	£1,500

If you would like to discuss subscription further please do not hesitate to contact the SAfE team via admin@schoolsallexcel.com or directly via 01483 749954.



For further information please contact:
admin@schoolsallexcel.com
01483 749954

Visit our website:
www.schoolsallianceforexcellence.co.uk
or follow us @schoolsallexcel

Registered office:
c/o St John the Baptist School
Elmbridge Lane
Woking
GU22 9AL



Harnessing the expertise
across a collaborative school
led system



Inclusion - a
shared
commitment

Continuous
improvement
through
collaboration

Excellent
support & training
to inspire our
schools

An education system
that is better for all

SAfE's Mission

"To be an inclusive partnership where all children and young people have the opportunities to flourish, enjoy learning and achieve the best possible outcomes through excellent education"

An education system that is better for all

