



SFET Teaching School Hub

Success for Every Teacher
Serving Hampshire and Surrey

TSH newsletter edition 2: spring 2022

Welcome

We are delighted to introduce the second *SFET Teaching School Hub* newsletter. Our aim is to provide a communication channel and single reference point for anyone seeking information regarding the multitude of training, support, system leadership and professional development opportunities available across the region.



By working together, we can improve teacher development for all teachers and leaders across our schools, irrespective of phase, faith or fortune, to ensure every child has access to high quality teaching, learning and outcomes.



We work to ensure that all practitioners, teachers and leaders can access high quality training, induction services, resources and research. We work with a number of organisations including Curriculum Hubs, Research Schools, Subject Associations, ITT providers, Hampshire and Surrey Local Authorities, the DfE, EEF, *Schools Alliance for Excellence* (SAfE), STSN and other Teaching School Hubs.

www.tshubsfet.org.uk



Become a regional ambassador school today.



This newsletter provides a snapshot of our [website](http://www.tshubsfet.org.uk), a one stop shop organised under helpful headings. You can access everything you need from one place.

Train to Teach

Early Career Teachers (ECF & Appropriate Body)

Professional Development and Training

Research

Bespoke School Support



www.tshubsfet.org.uk



@SFET_TSHub



tshub@sfet.org.uk



01252 986890

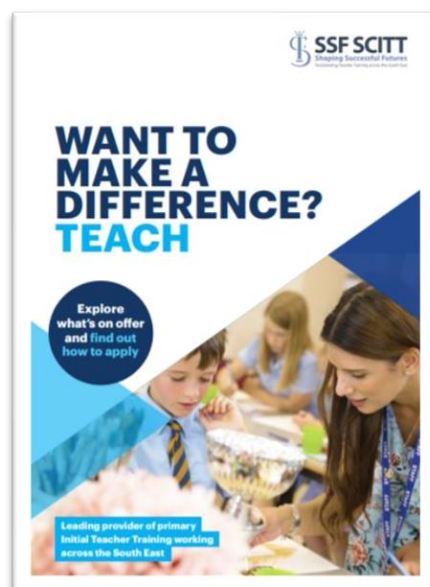
Train to Teach

There are several, school-led teacher training providers in the region and our joint vision is to recruit and train outstanding teachers and school leaders of the future. [Click here](#) to find links to their websites and upcoming recruitment and information events, in what is widely regarded as **the best recruitment pool in the country!**



To view the **events calendar**, please [click here](#).

The Teaching School Hub team are here for any providers seeking advice on the 2022 accreditation process. Just get in touch.



If you are a provider and would like to be featured or take part in regional recruitment events then please get in touch (tshub@sfet.org.uk).



SFET Teaching School Hub
Success for Every Teacher
Serving Hampshire and Surrey

Train to Teach

Early Career Teachers (ECF & Appropriate Body)



SFET Teaching School Hub
Success for Every Teacher
Serving Hampshire and Surrey

We offer both the [Early Career Framework](#) (ECF) and an [Appropriate Body](#) service to over **270** ECTs in schools across Hampshire and Surrey. You will find a wealth of information about the Early Career Framework and Induction reforms on our [website](#).



- ✓ Partnership
- ✓ School-led with regional understanding
- ✓ Workload friendly
- ✓ Local knowledge
- ✓ Cross-phase expertise
- ✓ Efficient service
- ✓ Dedicated team you can contact

Thank you for your feedback

Thank you for all of the positive feedback that has been received following our announcement to simplify Induction in 2022 for your ECTs and Mentors.

School capacity has never been under so much strain and as school leaders ourselves we know how to help. We will not require you to release your mentors and ECTs for a full day of Induction training. We will use a carefully blended approach of recordings, short face-to-face sessions and virtual meetings in place of a 6 hour event. We will also continue to work with our facilitation team on the pace of sessions and keep these to time.



Register [here](#) for all ECT services (including mid-year starters)

Click [here](#) to find out more about Induction.

Early Career Teachers (ECF & Appropriate Body)



www.tshubsfet.org.uk



@SFET_TSHub



tshub@sfet.org.uk



01252 986890

Professional Development

Visit our [website](#) to find out more about the wealth of CPD opportunities and free resources on offer to your school.

COMING SOON

Visit our [events calendar](#) or [website](#) to see what is coming up soon near you.

The wealth of professional development opportunities in the area can make it challenging to keep an eye on the events being offered.

Our Teaching School Hub will signpost regional and national training for you in one place (www.tshubsfet.org.uk).

We want to ensure that you get to hear about events run by your regional Curriculum Hubs, DfE, schools and other outstanding training providers.

NPQ
National
Professional
Qualifications

SENCO
Award

TA
Development
Programme

Curriculum
Hubs

RSHE
Hub

EYFS

Other
CPD

DfE
Training

Subject
Associations

TA Training

A combination of inspiring online and face to face workshops with a personalised programme of self-study online learnings. Makes professional development **relevant** and **accessible** for all Teaching Assistants.

Click [here](#) for
info or to
book.
Only £150.

anspear



SFET Teaching School Hub
Success for Every Teacher
Serving Hampshire and Surrey

RSHE Training

Get the facts
on Relationships
and Sex Education

Our RSHE Hub has now trained over **1,000 teachers**.

[Click here](#) for a treasure trove of resources, free training, videos, OFSTED support and more.



www.tshubsfet.org.uk



@SFET_TSHub




tshub@sfet.org.uk



01252 986890

Science Learning Partnerships



BOOK HERE

The Nuts and Bolts of Science

Remote Course


Quality first teaching is going to play a massive part in the post covid curriculum this academic year. We will need to identify and address any learning gaps, ensure that we are pushing forward proven strategies in our science teaching to enable students to feel confident in their abilities.

Session 1 - POWER OF MODELLING
Wednesday 2nd March, 4-5pm Virtual

Session 2 - RETRIEVAL PRACTICE,
Wednesday 23rd March - 4-5pm, Virtual

Session 3 - USING PRIOR KNOWLEDGE TO LOWER COGNITIVE LOAD
Wednesday 25th May - 4-5pm, Virtual

Session 4 - HOW SPACED IS YOUR LEARNING
Wednesday 29th June - 4-5pm, virtual



£90 for the full course - Maintained
£240 Non-maintained

Sessions can be booked individually at a cost of £40 per session for maintained schools. Please email sussex-surreySLP@downlands.org

For more details of course content and to book please [click here](#)



British Science Week 2022

GROWTH

Preparing for British science week

We are running a FREE Saturday morning session full of ideas and activities for you to use in class during British Science Week. The 2022 topic is Growth.

Whether you decide to explore plant growth in your window box or human growth both physical and mental. Come and find out ideas for activities you can use in the classroom



SATURDAY 12TH
FEBRUARY 11AM -12PM

Book your FREE place Here

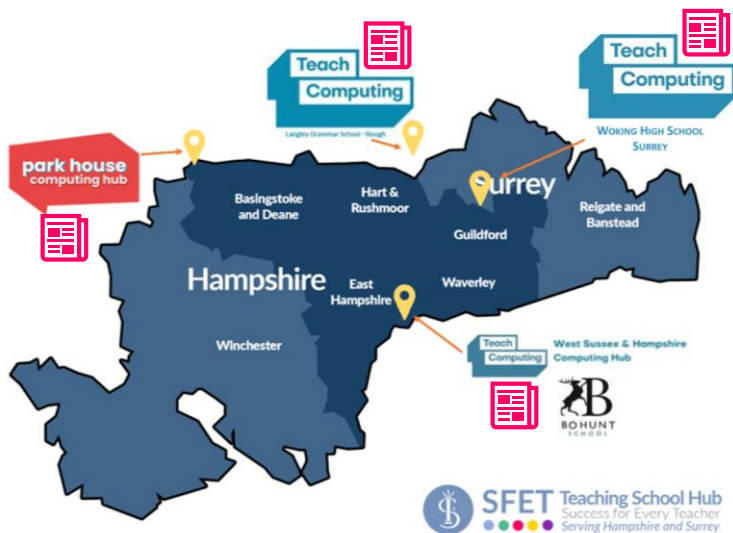
Click [here](#) to find out more about SLP work near you

Computing Hubs



A vision for every child in every school in England to have a world-leading computing education.

[Click here](#) to contact your regional **Computing Hub** or to find out more



Click this icon on the map for **spring newsletters & free CPD**



[Book a free health check](#) for your school



[Access free kit](#) for your school

Computing At School, SafeToNet and Digital Schoolhouse have come together to produce a **free pack of resources** for teachers which assists pupils to design a video game. This pack includes:

- Activity plans
- Four different activity worksheets in KS1, KS2 and KS3 formats
- Links to additional resources and assemblies
- Certificates to create a class or school challenge.



Just head over to:

<https://safetonet.com/landing-pages/safer-internet-day-competition/>

EYFS



EARLY YEARS TRAINING

Guildford Training and Development Centre is offering the following courses at Hazel Avenue, Guildford GU1 1NR in 2022:

Online sessions: Learning and Assessment in Reception – bringing it all together 1st and 3rd February 2022 1.30-3.15pm (virtual)

Developing SEN practice in EYFS

Session 1: How to build support strategies in the EYFS learning environment 9th February 2022 2.00-4.00pm

Learning and Assessment in Reception – bringing it all together 23rd February 2022 1.30-4.30pm

Exploring clay

How to use clay with young children 24th February 2022 2.00-4.00pm

Sewing, weaving and threading – getting started

How to offer sewing, weaving and threading in EYFS 2nd March 2022 2.00-4.00pm

Block play

Explore how block play supports children's learning across the curriculum 16th March 2022 2.00-4.00pm

Links to book places will be available on our websites from January 2022: www.guildfordncc.surrey.sch.uk and www.thefroebelpartnership.co.uk.



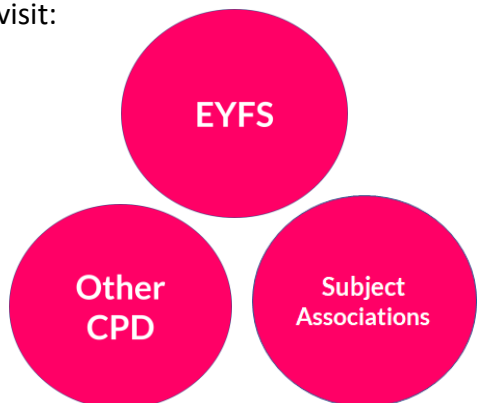
Click [here](#) to find out more



SFET Teaching School Hub
Success for Every Teacher
Serving Hampshire and Surrey

Our [website](#) has a dedicated tab for other CPD opportunities, such as the Festival of Education, Early Years TV and more.

Click on any of the pink dots below to visit:



English Hubs

English Hubs
 Whiteknights English Hub

Nothing matters more than stopping, listening and responding positively to the young child
 ~ Julie Fisher 'Interacting or Interfering'

IMPROVING INTERACTIONS IN EARLY YEARS
FREE WEBINAR
 09 FEBRUARY 2022
 4:00pm - 5:30pm
 Make the most of the quality interactions in Early Years, making language intentional and supporting your team.
 Aimed at - Early Years teachers and teaching assistants
www.whiteknightsenglishhub.org.uk | hubadmin@whiteknightsenglishhub.org.uk

An introduction to the Reading Framework

English Hubs
 Whiteknights English Hub

Learn about the background and key elements of the Reading Framework
 Reflect on the content of the Reading Framework and what it means for your phonics provision
 Get guidance on how to set out an action plan for your school

OUTCOMES

- Set out some of the research underpinning the importance of developing talk, stories and SSPs
- Provide practical support for high-quality reading teaching
- Support schools to evaluate their teaching of early reading
- Explain the importance of systematic phonics for older pupils

16 FEBRUARY 2022
 4:00pm - 5:30pm
FREE WEBINAR
 This is an excellent opportunity to learn more about the Reading Framework with Literacy Specialists from the Whiteknights English Hub

Department for Education
English Hubs

English Hubs offer free support to schools to improve the teaching of phonics, early language and reading in Reception and Year 1.

[Click here to find out more or to contact your local hub.](#)



Maths Hubs



NEHS Maths Hub is currently recruiting for the following **FREE** professional development programmes.

Overcoming barriers in Mathematics in KS2 and KS3: Starts 23 February 2022

Can knowledge of SEND, and implementation of this knowledge, reduce the levels of maths anxiety within the classroom? [CLICK HERE](#)

Supporting Secondary Teaching Assistants in Maths: Starts 2 March 2022

A fantastic opportunity for Secondary TAs who are supporting students in maths, to build their subject knowledge and confidence. [CLICK HERE](#)

Mathematical Thinking for GCSE : Starts 22 February 2022

A programme for Secondary Maths teachers and their departments aimed at developing students' mathematical thinking by the end of KS4. [CLICK HERE](#)



Solent Maths Hub is currently recruiting for the following **FREE** professional development programmes. Please [CLICK HERE](#) for more information.

Early Years and Primary Work Groups

Specialist Knowledge for Teaching Maths - EYFS
 Specialist Knowledge for Teaching Maths - Primary/
 Teaching Assistants/Early Career Teachers
 Year 5-8 Continuity

Secondary Work Groups

Secondary Subject Leadership Work Group
 Mathematical Thinking
 Year 5-8 Continuity
 Year 7-11 Coherence Work Group
 Specialist Knowledge for Teaching Maths (SKTM) -
 Secondary Non- Specialist Teachers.
 Supporting SEND Pupils in Inclusive Classrooms



Behaviour Hubs



Partner school applications now open

The Behaviour Hubs' programme is now accepting applications for new Partner schools to join the **April 2022 cohort**. This DfE-funded programme operates across all school phases and provisions, providing free tailored support, training and advice to make sustainable changes to your school's behaviour culture.

Open to schools with a 'Good', 'Requires Improvement' or 'Inadequate' Ofsted rating, Behaviour Hubs helps schools to diagnose issues and implement new bespoke behaviour approaches that complement what already works.



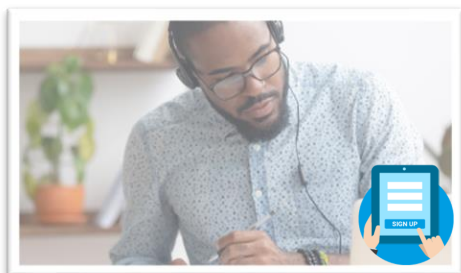
You can read more about the Behaviour Hubs' programme ([CLICK HERE](#)), and even register to join their upcoming webinar about how to become a Partner school ([CLICK HERE](#)).



Language Hubs

NCELP | National Centre for Excellence
for Language Pedagogy

Understanding, improving and promoting language learning



FREE CPD: MFL CURRICULUM DESIGN AND PEDAGOGY

Research-informed French, German and Spanish teaching at KS3 and KS4 for higher uptake and greater success at GCSE.

The course is **free** to attend and will consist of five 2.5 hour remote learning sessions over one term complemented by online peer and instructor support. Applications are currently open for Summer Term courses. [CLICK HERE](#) to find out more or apply.

EDTECH Demonstrator



EDTECH
Demonstrator Programme

EDTECH
Demonstrator Programme

The EdTech Demonstrator Programme was developed by the DfE to ensure schools and colleges across England could access free, expert advice on educational technology.

REQUEST RAPID SUPPORT
Available Now

REQUEST LONG-TERM SUPPORT

DROP-IN SURGERIES
Tuesdays and Thursdays - [click here to book](#)

HOW IT WORKS

Research



So far this year **HISP** have been running several programme partnerships across the region, including *'Making the difference for disadvantaged pupils'*, *'Effective learning behaviours'*, and *'Supporting pupils with SEND in mainstream schools'*.

Recordings of their webinars, summarising the recommendations from the new EEF *'Teacher feedback to improve pupil learning'* and *'Effective professional development'* guidance can be accessed here:



Effective professional development: [CLICK HERE](#)

Teacher feedback to improve pupil learning: [CLICK HERE](#)

Updated EEF Teaching and Learning Toolkit: [CLICK HERE](#)

You can access the **full reports** ([CLICK HERE](#)) as well as the **updated Teaching and Learning Toolkit** ([CLICK HERE](#))

Please do get in touch with HISP via their website if they can support you in any way.



Follow HISP on Twitter [@HISPPResearchSch](#)

Sign up to the HISP newsletter [here](#)



SFET Teaching School Hub

Success for Every Teacher
Serving Hampshire and Surrey

Click [here](#) to view the research pages of our website for the EEF, researchEd and more.



E
E
F
Education
Endowment
Foundation



ED



A spotlight on SEND



SFET Teaching School Hub
Success for Every Teacher
Serving Hampshire and Surrey

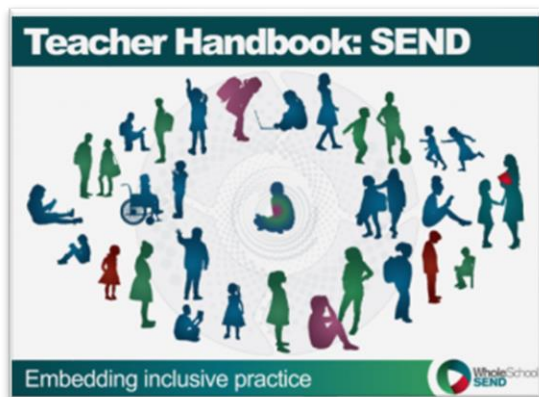
Meet Kenny Wheeler, our **SEND Innovation Lead**

We are delighted to welcome Kenny to the consultancy team. Kenny will support ECF facilitators in the national roll-out of the Early Career Framework. Kenny will ensure delivery of Teach First materials supports

Early Career Teachers within specialist settings. Kenny is a qualified teacher and leader whose roles have included SENCO, school-to-school support, NPQML and NPQSL subject expert, School Effectiveness Consultant for Inclusion and Leadership, NASENCO Lead facilitator and a senior consultant for a literacy charity. Kenny is passionate about coaching in order to support sustainable leadership development in schools.

INCREDIBLE FREE RESOURCE

Whole School SEND (WSS) have recently launched a [SEND Teacher Handbook](#). This incredible free resources is a comprehensive one-stop-shop resources aimed at supporting teachers to develop and embed SEN and inclusive practices in their classrooms. It is cross-phase and subject specific and is a resource we would encourage you to become familiar with and share with your colleagues and local schools.



Undershaw

SEND Training on the Surrey/Hampshire border



Speech and Language Support for 11-16s

This course is written for those of you supporting learners with a range of SEND but especially speech, language and communication needs (SLCN) in secondary schools and special units. [Click here](#) to find out more.

SENCO AWARD



SFET Teaching School Hub
Success for Every Teacher
Serving Hampshire and Surrey

SFET Teaching School Hub is delivering **The National Award for SENCOs (NASENCO)** in partnership with the University of Roehampton (**Postgraduate Certificate in Leadership and Management in Special and Inclusive Education**). [Click here](#) to find out more or register for a 2022/23 cohort.



www.tshubsfet.org.uk



[@SFET_TSHub](https://twitter.com/SFET_TSHub)



tshub@sfet.org.uk



01252 986890