



THE UNIVERSITY OF  
BUCKINGHAM

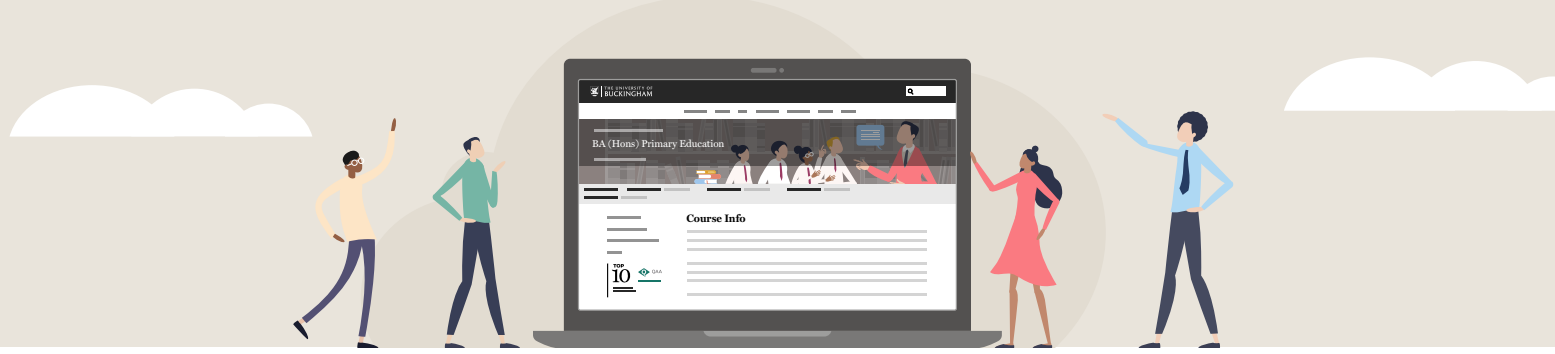


# Frequently Asked Questions

BA (Hons) in Primary Education

BA (Hons) in Secondary Education  
(Maths and SEND)

For support staff in schools  
and school leavers



## Admissions

### How can I apply?

Applications are made online at:

**Primary** [www.buckingham.ac.uk/courses/undergraduate/ba-hons-primary-education/](http://www.buckingham.ac.uk/courses/undergraduate/ba-hons-primary-education/)

**Secondary** [www.buckingham.ac.uk/courses/undergraduate/ba-hons-secondary-education-maths-and-send/](http://www.buckingham.ac.uk/courses/undergraduate/ba-hons-secondary-education-maths-and-send/)

Just hit the requisite **Apply now** button and complete the application form.

### What are the entry requirements for the course?

- 1 You must be in employment in a school and your school will need to write a letter supporting your application.
- 2 You cannot have a UK-recognised university degree already.
- 3 You should have passed two A-levels or equivalents or have completed our **Introduction to Academic Writing** course.
- 4 You will need a Grade C/4 in GCSE English for both courses and a Grade C/4 in GCSE Maths for the Secondary course.
- 5 You must pass an interview.
- 6 You must be determined and organised.

To teach in a primary school you will also need to have passed GCSE Maths and Science. So, at some point before the **Qualified Teacher Status (QTS)** course you need to have done that.

To check whether your Level 3 qualifications are valid you can use the UCAS tariff checker website: [www.ucas.com/ucas/tariff-calculator](http://www.ucas.com/ucas/tariff-calculator).

To check whether your Level 4 qualifications are valid please contact **BAPRIM-EDU@buckingham.ac.uk**.

If you are unsure if your qualifications meet the entry requirements, contact us using the email addresses in the 'Application' section above.

### Overseas qualifications

Overseas qualifications must be checked through UK ENIC to show they are the same standard as British A-levels or equivalents. Details are available here: [www.enic.org.uk/](http://www.enic.org.uk/).

Can I defer my offer?

You will have to contact the **Admissions Officer** for your course to discuss your situation. You will find their contact details at the bottom of your offer letter.

Do you accept transfer students?

Unfortunately, we do not accept transfers for this course at this stage. However, if you have any questions on your situation, please contact **Admissions**.



## Fees and finance

How are payments made to the University of Buckingham?

The initial **£300** registration fee is paid to the University upon application, you will be sent a link and payment details via your welcome email. This needs to be paid before your interview. If you are having difficulties with making a payment, please contact **BAPRIM-EDU@buckingham.ac.uk** or **BASEC-EDU@buckingham.ac.uk**.

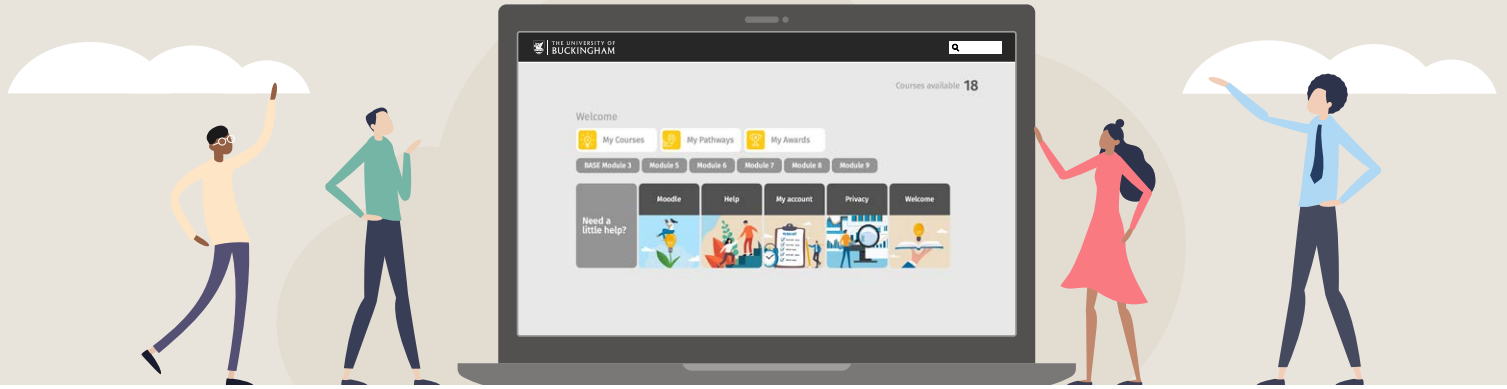
When do I have to pay my tuition fees?

Your tuition, or course fee, is due annually - before the start of your academic year.

You will have to list who is funding the course (self/school/third party) in your **Acceptance Statement**.

Can I apply to Student Finance?

Yes! The course is eligible for support from Student Finance. To find out more about how to apply for a student loan, please visit [www.gov.uk/student-finance](http://www.gov.uk/student-finance).



## Course delivery

**How is the course delivered?**

The course content is delivered through our partner Anspear's learning platform. Approximately every six weeks, you will get access to a new unit of the course on the learning platform. For each unit you will have material to read, videos to watch and questions to answer.

**How much work will the course require per week?**

Although it will vary from student to student, we estimate that the course will require approximately 8-12 hours of work per week.

**Who will be my tutor?**

Tutor allocation happens in June. It is planned that you will meet your tutor at the induction session.

**How often will I meet with my tutor?**

In addition to termly one-to-one meetings, your tutor will lead a group discussion each term, each lasting 1-2 hours. This will be held during non-school hours, for example, after 3.30pm. They will also be available to you on a one-to-one basis for consultation and guidance, via email or video call.

**How is the academic year structured?**

The course will be run on a four-term year:

**Term 1 | June > September**      **Term 3 | December > March**  
**Term 2 | September > December**      **Term 4 | April > June**

There will be two week long breaks in the course during the Summer and at Christmas and Easter.

**Will I get a chance to meet other students on the course?**

The course is fully online but you can discuss the course with others in your tutor group meetings. Alternatively, there may be other students on the course from your school or multi-academy trust who you can discuss the course with.



How is the course assessed?

The course is assessed via reflective pieces written during the term and end of module comprehension and essay assignments. These will be based on your study plus in-school observations and experiences

The final **Enquiry module** is taken in **Year 3**. It is assessed through an 8000 word action research project completed over two terms.

What does the 'Introduction to Study' course include?

The **Introduction to Study** course will introduce you to the learning platform and cover topics like setting study goals, how to approach distance learning, time management, research skills, extended writing skills, referencing and workplace skills. It is designed to help get you up to speed before the course begins.

What is the 'personal device' provided for the course and can I use my own device?

Our partners Anspear will provide you with a *Chromebook* for the duration of the course, it will be sent to your school in time for the **Introduction to Study** course.

Is there a minimum number of hours that you need to be employed to apply for the course?

Yes. We ask that students work for at least two days a week in their school. This is to ensure that you have enough time in school to reflect on your experiences and ensure that you have the chance to liaise with other colleagues and observe good practice.

Is the course classroom-based or self-guided?

The course is self-guided. The course content is delivered through our partner Anspear's learning platform. This gives you the opportunity to study anywhere and at your own pace.



## Technology and the learning platform

**What do I need to access the course?**

You will get access to an email account, our online university library and learning platform via your university login details. These will be sent to you prior to course commencement, in late June.

**Can I learn on a phone or tablet?**

Yes!

Our partner Anspear's learning platform offers a great experience on both smartphones and tablets. Download the app and log in with the same details.

**Can I learn offline?**

Yes!

Log in to the app on a phone or tablet to do this. In the mobile app you can download all your modules and units and study them offline, anytime, anywhere.

Remember to connect to the internet when you can. This will synchronise your learning activity with your online account so you can carry on from where you left off.

**What happens if I forget my login details?**

No problem.

Follow the prompts on *Microsoft 365* or contact the University IT department at [helpdesk@buckingham.ac.uk](mailto:helpdesk@buckingham.ac.uk).

**Is there support available from Anspear for any learning platform issues?**

Yes.

Please consult the help page in the app or contact [uob@anspear.com](mailto:uob@anspear.com).

